

INTERMOT DUAL DISPLACEMENT MOTORS

IAC SERIES

H1 MODEL

**IAC 195/S
195/BH**

**IAC 250/S
250/BH**

INDEX

IAC 195/S-250/S H1 D40	-----	Pag.	16
IAC 195/BH-250/BH H1 D40	-----	"	17
IAC 195/S-250/S H1 D47 C3 SV	-----	"	18
IAC 195/BH-250/BH H1 D47 C3 SV	-----	"	19
IAC 195/S-250/S H1 D47 C3-24 SV	-----	"	20
IAC 195/BH-250/BH H1 D47 C3-24 SV	-----	"	21
ORDERING INSTRUCTIONS	-----	"	22

MOTOR TECHNICAL DATA

IAC 195 H1

	195	175	150	125	100	95	75	69
Displacement [cc/Rev]	195	175	150	125	100	95	75	69
Specific theoretical torque [Nm/bar]	3.1	2.8	2.4	2	1.6	1.5	1.2	1.1
Continuous maximum speed [rpm]	750	750	750	775	775	775	800	850
Minimum speed [rpm]	3	3	3	4	4	4	5	5
Mechanical efficiency [%]	89.5	89.2	89	88.5	88	87.8	87	85.5
Starting mechanical efficiency [%]	84.5	84.2	85	84.5	84	83	81	78
Continuous maximum power [kW]	36	34	32	30	28	28	26	24
Intermittent maximum power [kW]	45	42.5	40	37.5	35	35	32.5	30
Continuous maximum pressure [bar]	250	250	250	250	250	250	250	250
Intermittent maximum pressure [bar]	275	275	275	275	275	275	275	275
Peak pressure [bar]	350	350	350	350	350	350	350	350
Recommended flushing flow [l/min]	8	8	8	8	8	8	8	8

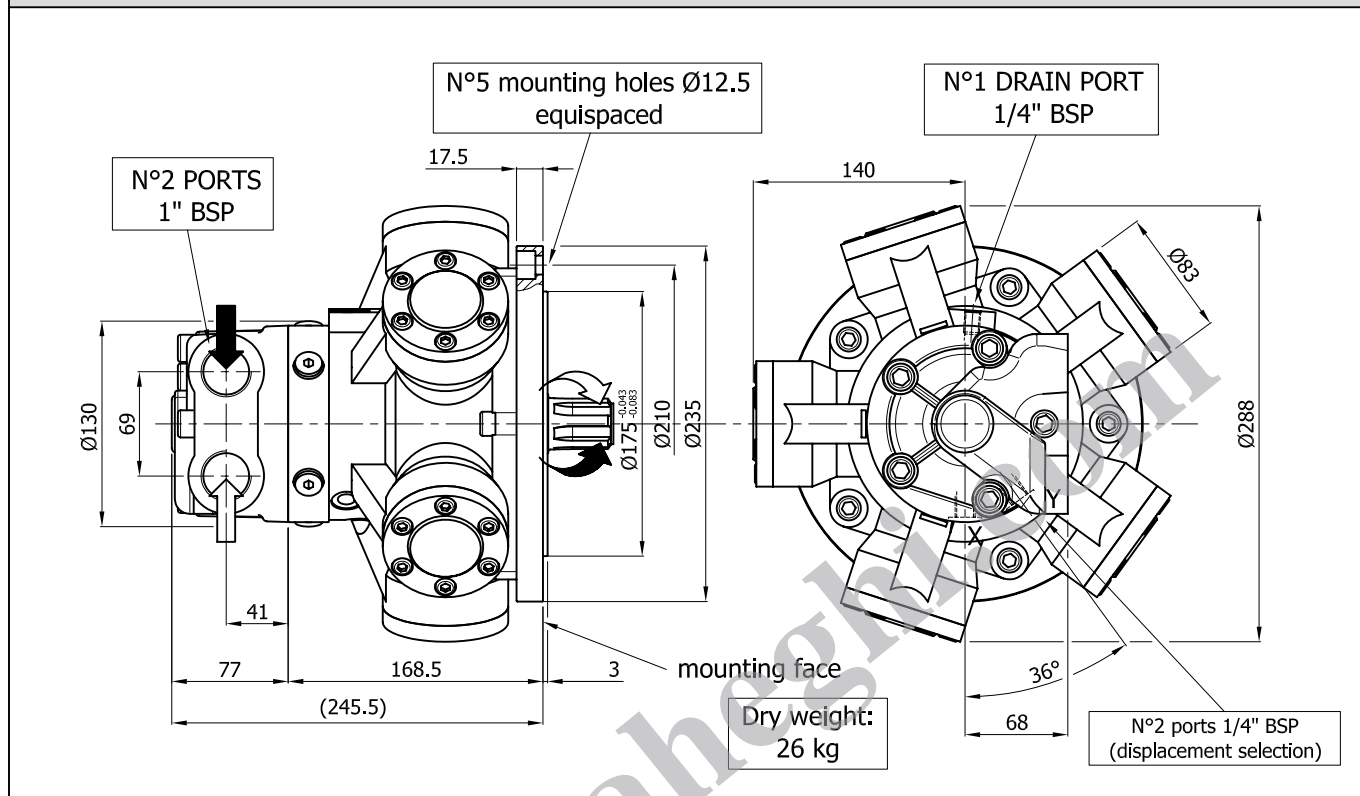
IAC 250 H1

	257	232	195	175	150	125	100	95
Displacement [cc/Rev]	257	232	195	175	150	125	100	95
Specific theoretical torque [Nm/bar]	4.1	3.7	3.1	2.8	2.4	2	1.6	1.5
Continuous maximum speed [rpm]	700	700	750	750	750	775	775	775
Minimum speed [rpm]	3	3	3	3	3	4	4	5
Mechanical efficiency [%]	88.5	88.2	88	87.5	87	86.8	86	84.5
Starting mechanical efficiency [%]	83.5	83.2	84	83.5	83	82	80	77
Continuous maximum power [kW]	38	37	36	34	32	30	28	28
Intermittent maximum power [kW]	47.5	46	45	42.5	40	37.5	35	35
Continuous maximum pressure [bar]	250	250	250	250	250	250	250	250
Intermittent maximum pressure [bar]	275	275	275	275	275	275	275	275
Peak pressure [bar]	350	350	350	350	350	350	350	350
Recommended flushing flow [l/min]	10	10	10	10	10	10	10	10

INTERCHANGEABLE WITH GM1

SIZE

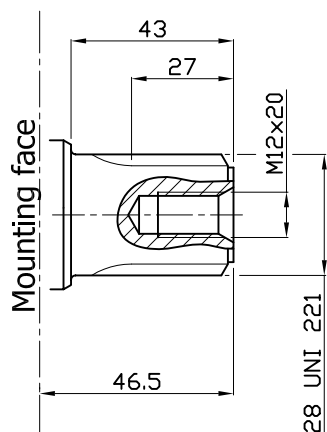
IAC 195/S-250/S H1 D40



SHAFT

IAC 195/S-250/S H1 D40

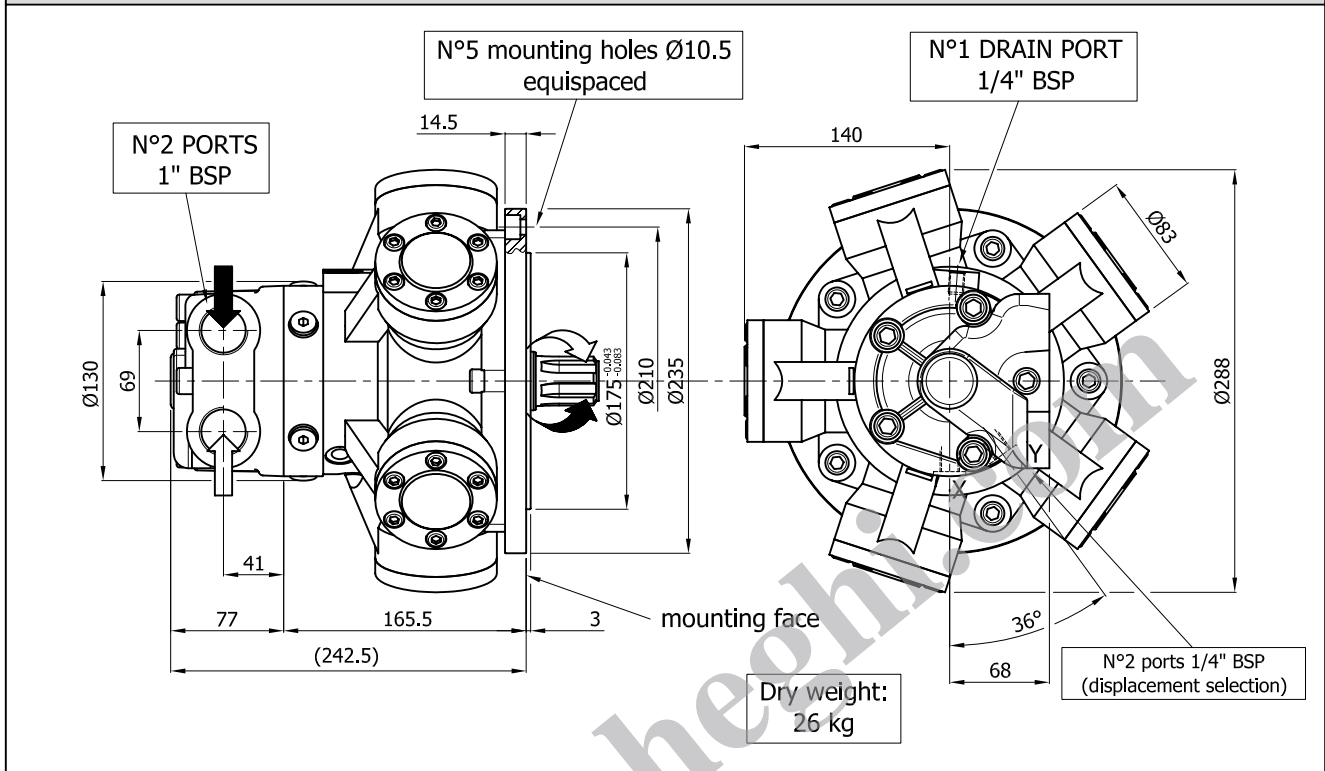
A0: Standard splined shaft



INTERCHANGEABLE WITH BH

SIZE

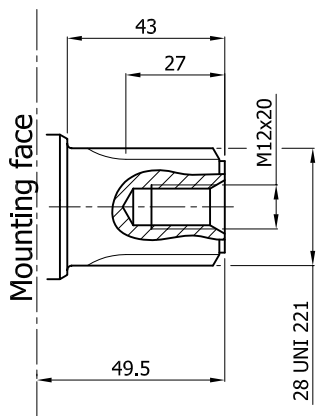
IAC 195/BH-250/BH D40 H1



SHAFT

IAC 195/BH-250/BH D40 H1

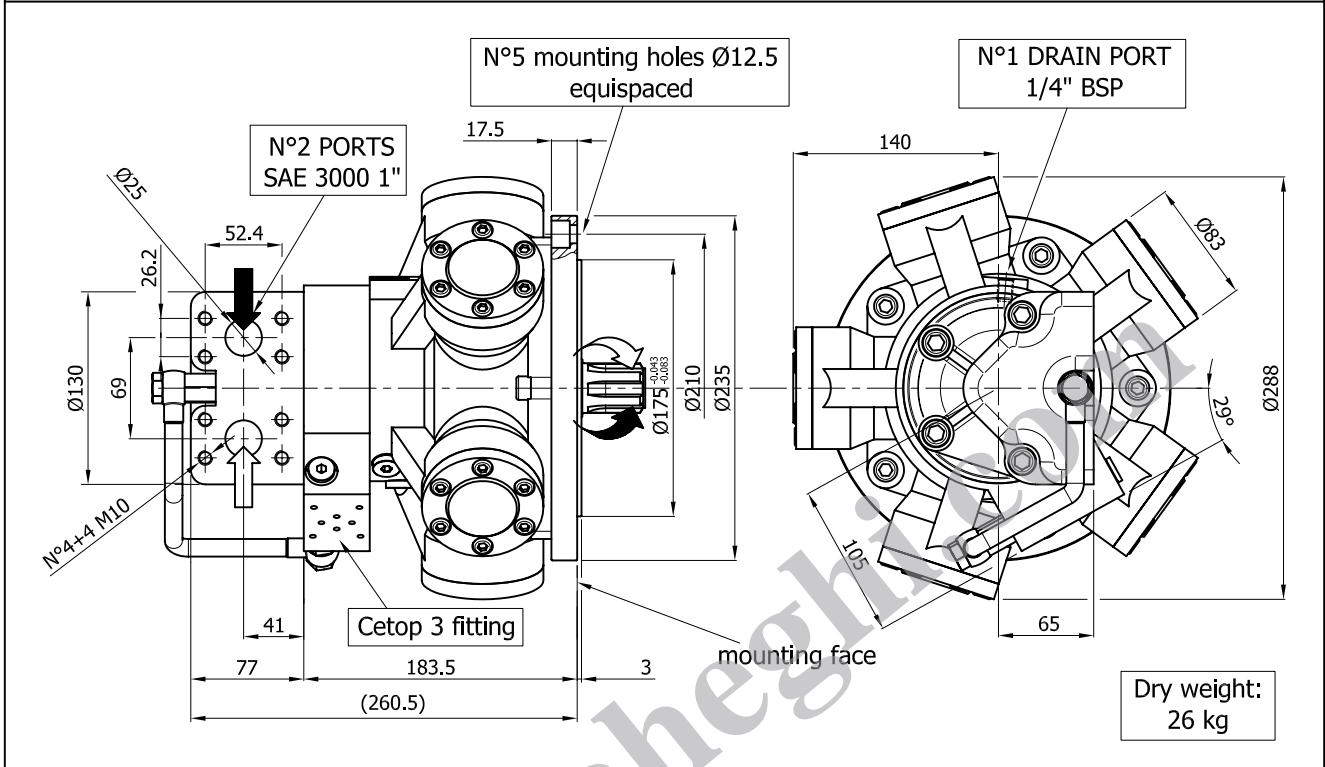
A0: Standard splined shaft



INTERCHANGEABLE WITH GM1

SIZE

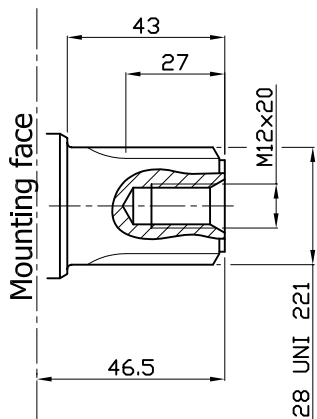
IAC 195/S-250/S H1 D47 C3 SV



SHAFT

IAC 195/S-250/S H1 D47 C3 SV

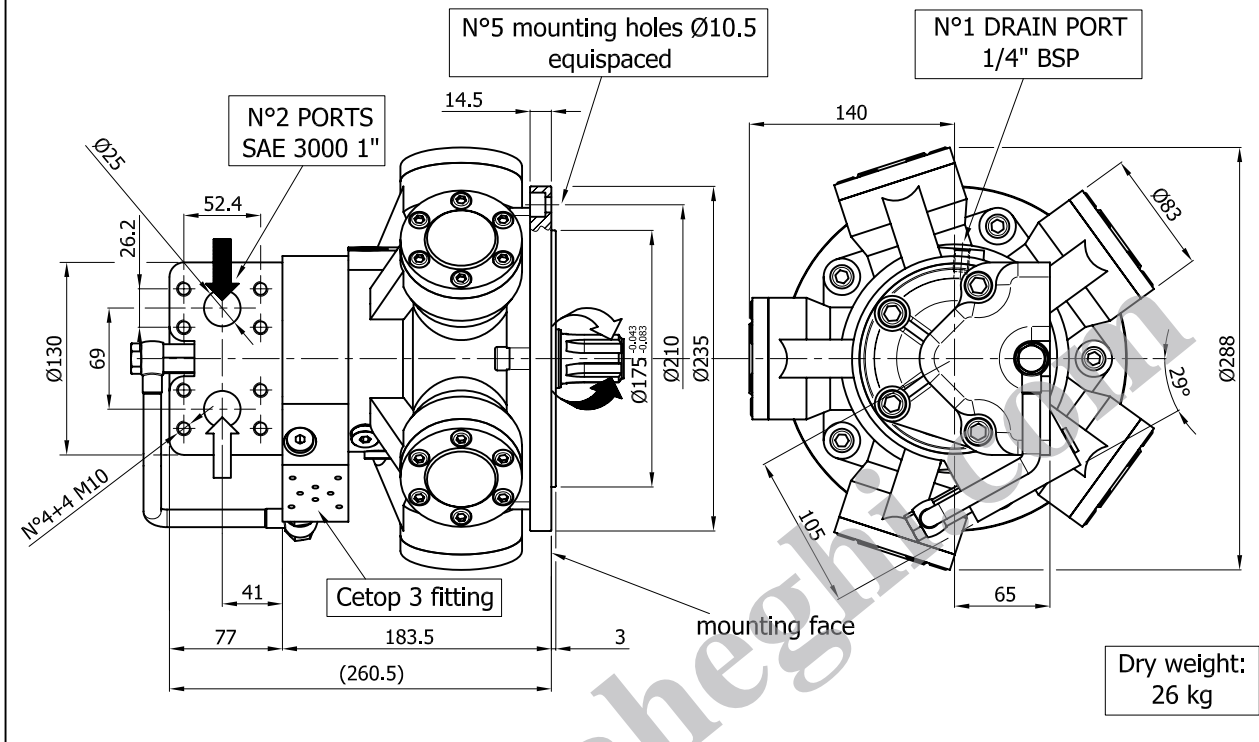
A0: Standard splined shaft



INTERCHANGEABLE WITH BH

SIZE

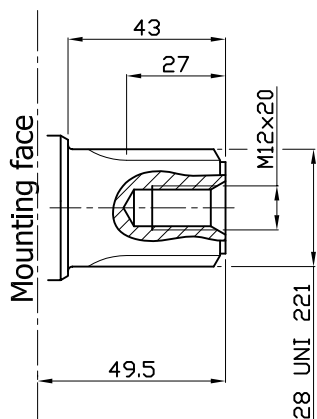
IAC 195/BH-250/BH H1 D47 C3 SV



SHAFT

IAC 195/BH-250/BH H1 D47 C3 SV

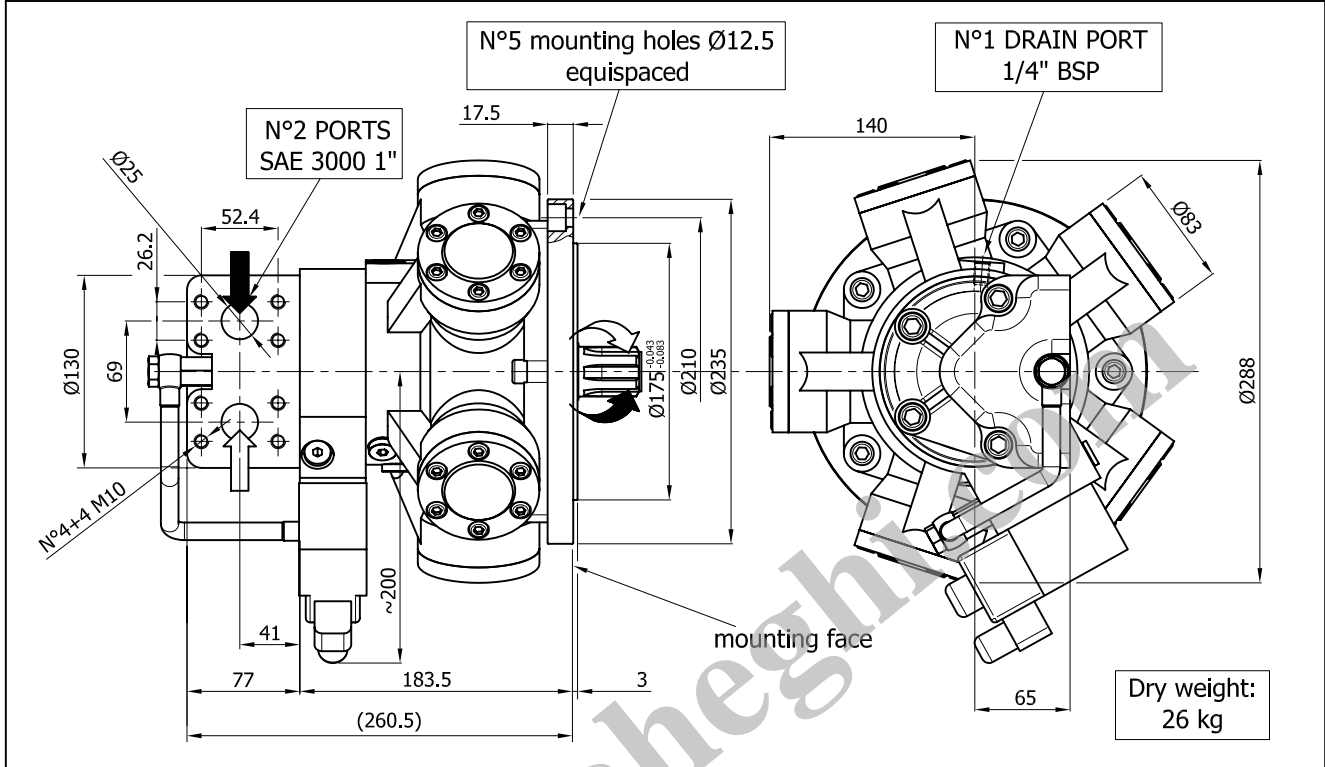
A0: Standard splined shaft



INTERCHANGEABLE WITH GM1

SIZE

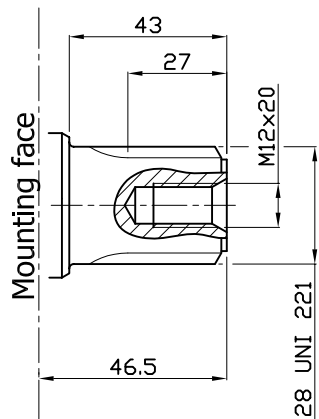
IAC 195/S-250/S H1 D47 C3-24 SV



SHAFT

IAC 195/S-250/S H1 D47 C3-24 SV

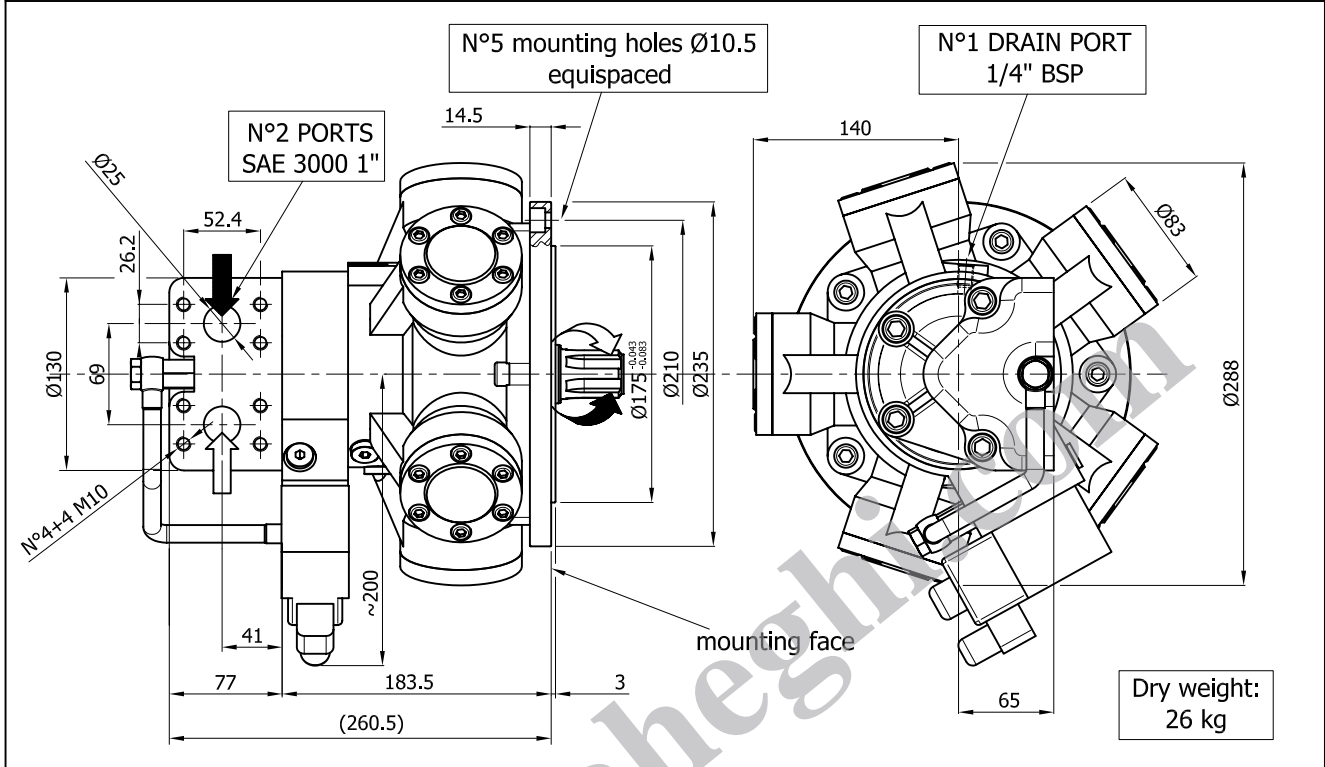
A0: Standard splined shaft



INTERCHANGEABLE WITH BH

SIZE

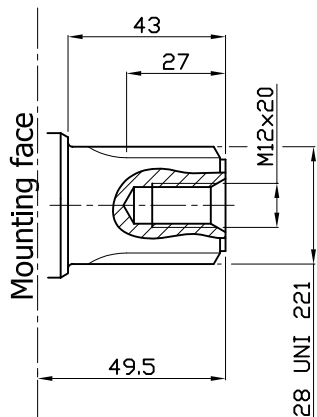
IAC 195/BH-250/BH H1 D47 C3-24 SV



SHAFT

IAC 195/BH-250/BH H1 D47 C3-24 SV

A0: Standard splined shaft



ORDERING INSTRUCTIONS IAC H1

	IAC --	/-	H1	A -	D --	---	---	SV	SB -	---	---	---
Motor model												
IAC 195												
IAC 250												
Motor interchangeability												
/BH												
/S												
Housing	H1											
Shaft												
A0 standard splined shaft												
Distributor												
D40 (1" BSP)												
D47 (SAE 3000 1")												
Tachometer (optional)												
TA												
TB												
EST												
EST.30												
J TACHOMETER PREDISPOSITION												
Cetop 3 fitting (optional, available only with D47)												
C3 (Cetop 3 fitting)												
C3-12 (Cetop 3 fitting, with 12V DC valve included)												
C3-24 (Cetop 3 fitting, with 24V DC valve included)												
Shuttle valve (optional)												
SV (available only with D47 distributor)												
Spline billet (optional)												
SB14												
Valves (optional)												
RVDA												
OVSA (see valve section for details and complete ordination code)												
OVDA												
ORVSA												
RVDAP												
Special features (optional)												
01 (Viton seals)												
02 (Oxynit treatment on the external motor surface)												
03 (Nitemper treatment on cylinder bores)												
Displacements												
MAX-MIN (MAXIMUM AND MINIMUM DISPLACEMENT OF MOTOR)												

IAC 250 H1	Max displacement range: 257-150 cc/Rev
	Min displacement range: 132-95 cc/Rev
IAC 195 H1	Max displacement range: 195-75 cc/Rev
	Min displacement range: 100-69 cc/Rev

Different displacements on request

EXAMPLE: IAC.195/S.H1.A0.D47.C3-24.01.257-95
 IAC.250/S.H1.A0.D40.TA.175-69
 IAC.250/BH.H1.A0.D47.C3.03.150-75